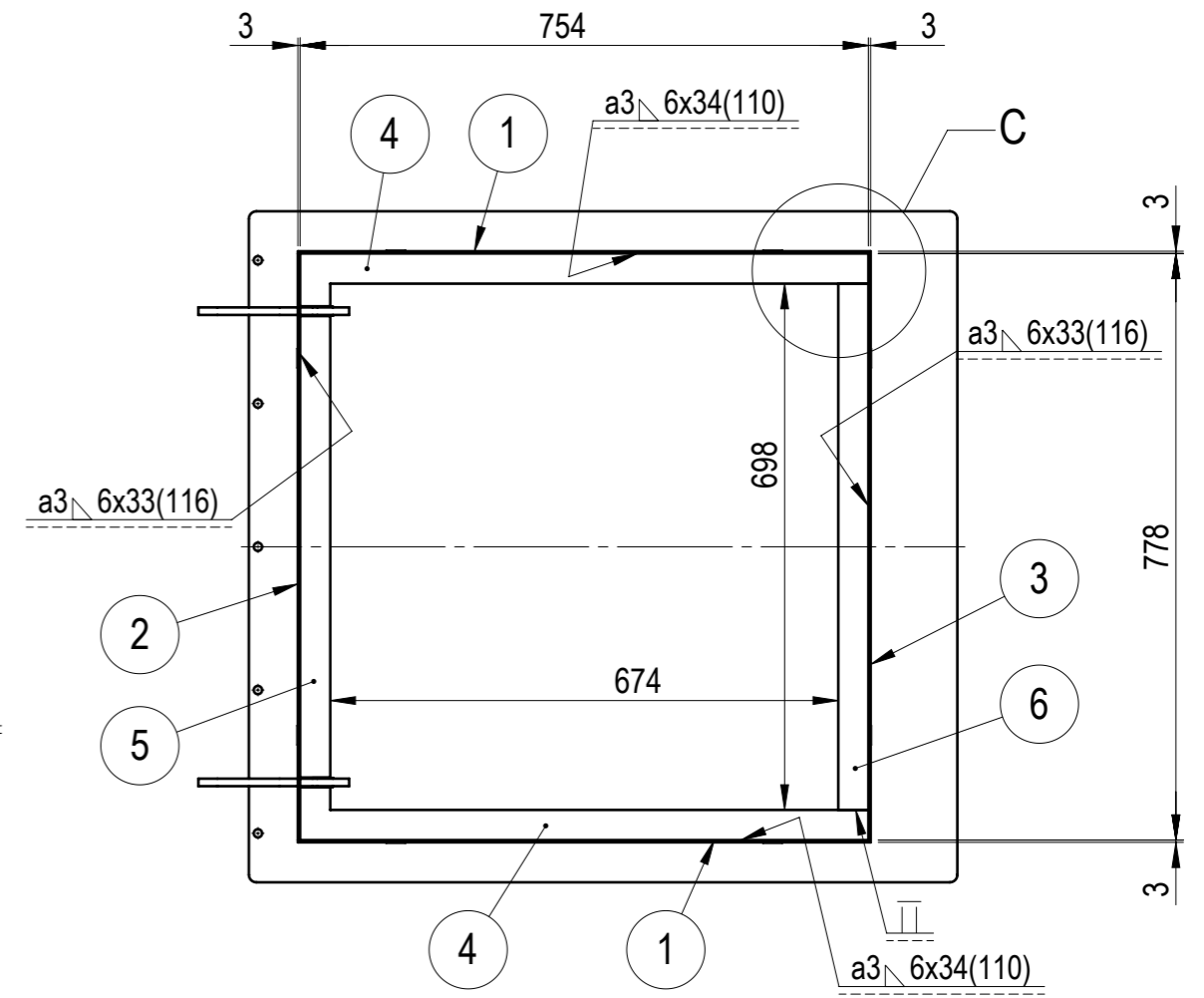
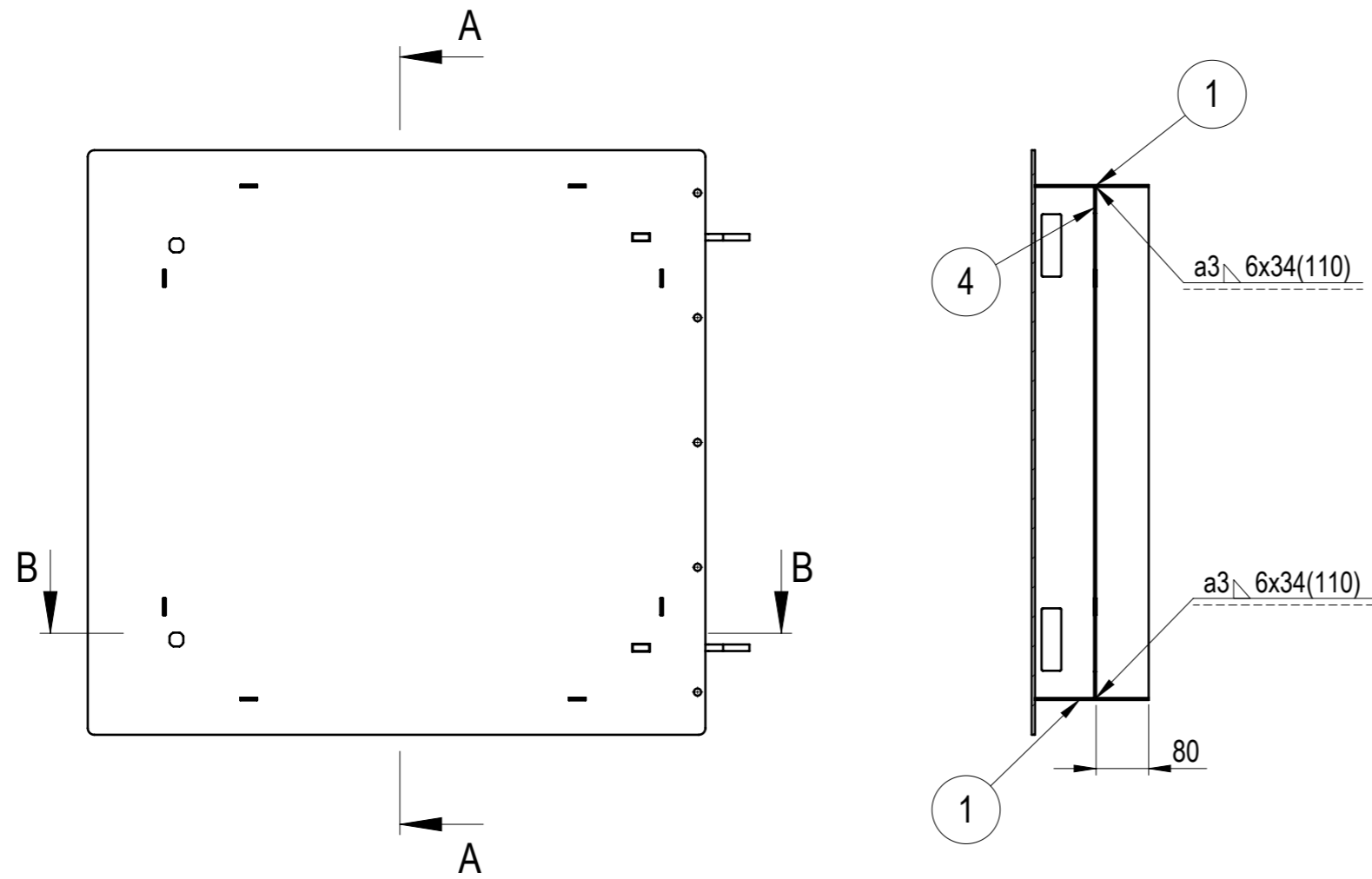


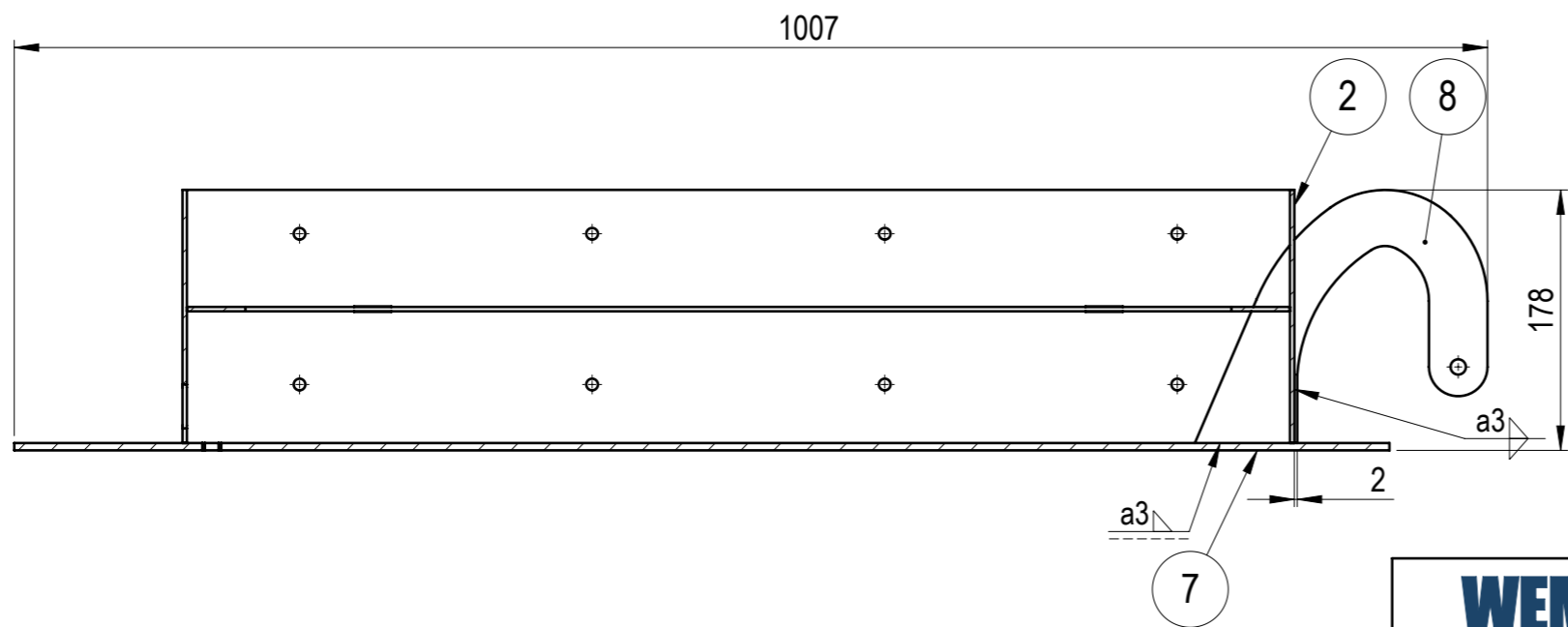
NO.	PART NO	DESCRIPTION	MATERIAL	PROCESSING	REVISION	WEIGHT	QTY
1	105-30212-01	Sandwich panel top & bottom	S355JR	LC		3.09	2
2	105-30212-02	Sandwich panel right	S355JR	LC		3.09	1
3	105-30212-03	Sandwich panel left	S355JR	LC		3.04	1
4	105-30212-04	Sandwich panel base top & bottom	S355JR	LC		0.74	2
5	105-30212-05	Sandwich panel base right	S355JR	LC		0.58	1
6	105-30212-06	Sandwich panel left	S355JR	LC		0.66	1
7	105-30212-07	Hatch	S355JR	LC		32.73	1
8	105-30212-08	Hinge	S355JR	LC		1.13	2

		MATERIAL	WEIGHT	DEBURR AND BREAK SHARP EDGES		REVISION	DATE	
		-	49.998 Kg	DO NOT SCALE DRAWING			12.05.2025	
Designed by D. Dislers Drawn by E. Kriviss Technical ref.		SURFACE PROTECTION	MACHINING	THERMAL CUTTING	WELDING	SCALE	FORMAT	
		-	ISO 2768 mK	ISO 9013 441	ISO 13920 BF	1:10	A3	
		NAME	SIGNATURE	PART NO.				
				105-30212-00				
		DESCRIPTION					SHEET 1/2	
		Sandwich cover panel						

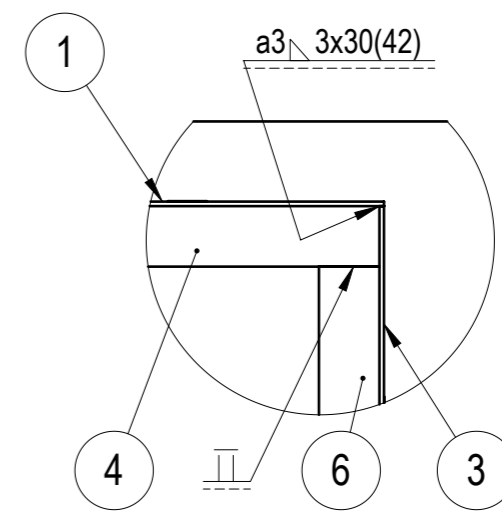
SECTION A-A



SECTION B-B
SCALE: 1 : 5



DETAIL C
SCALE: 1 : 5



		MATERIAL	WEIGHT	DEBURR AND BREAK SHARP EDGES		REVISION	DATE	
		-	49.998 Kg	DO NOT SCALE DRAWING			12.05.2025	
Designed by D. Dislers Drawn by E. Kriviss Technical ref.		SURFACE PROTECTION	MACHINING	THERMAL CUTTING	WELDING	SCALE	FORMAT	
		-	ISO 2768 mK	ISO 9013 441	ISO 13920 BF	1:10	A3	
		NAME	SIGNATURE	PART NO.				
				105-30212-00				
		DESCRIPTION					SHEET 2/2	
		Sandwich cover panel						